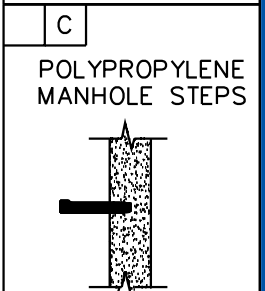
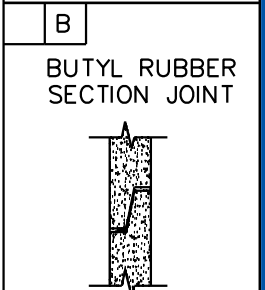
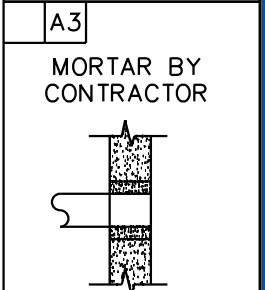
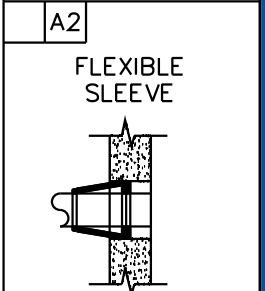
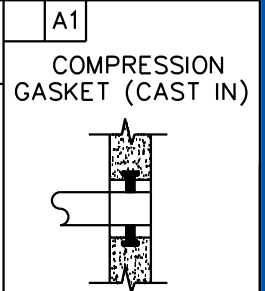
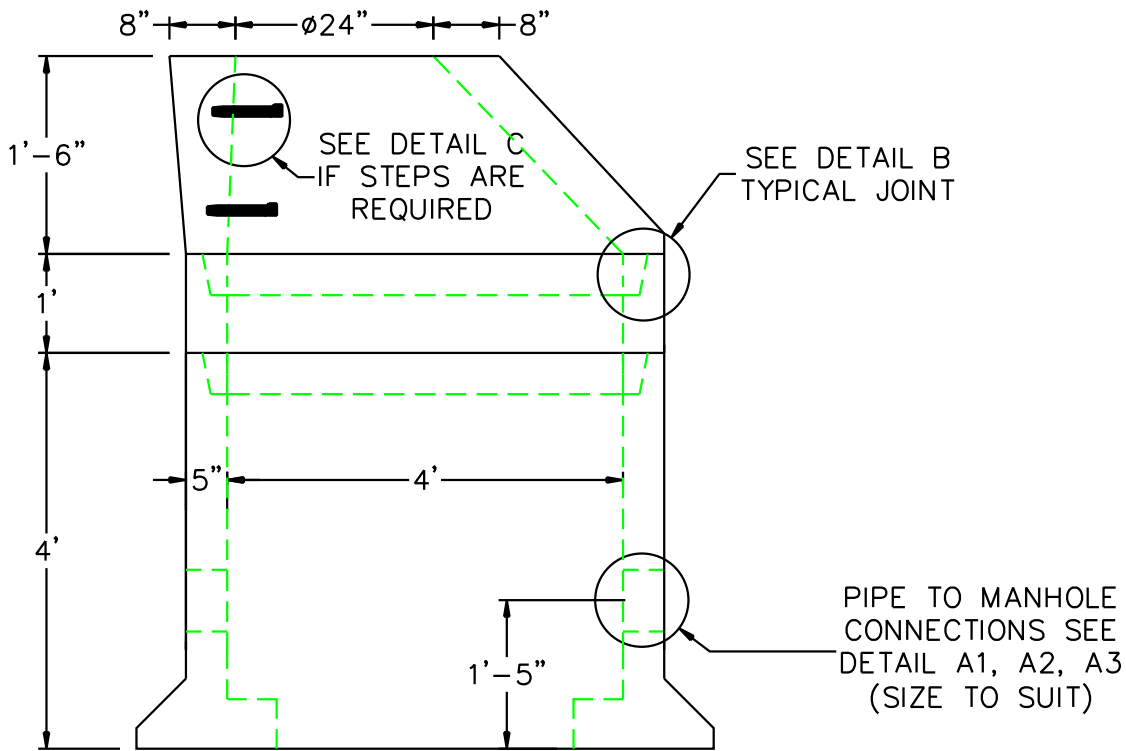
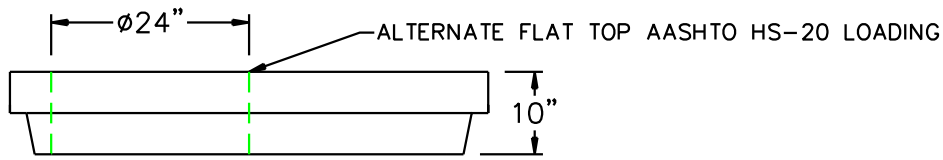


4' DIA METER PIT



DESIGN NOTES:

1. MANUFACTURED TO MEET OR EXCEED: ASTM C-478 & AASHTO M 199 SPECS.
2. CONCRETE = 4,000 PSI. MINIMUM CEMENT PER ASTM C-478 (6.1)
3. REINFORCED STEEL COMFORMS TO LATEST ASTM A 185 SPECIFICATIONS. 0.12 SQ. IN / LINEAL FT. AND 0.12 SQ. IN (BOTH WAYS) BASE BOTTOM
4. STEEL REINFORCEMENT TO MEET OR EXCEED AASHTO HS-20 LOADING
5. MANHOLE STEPS-POLYPROPYLENE COATED GRADE-60 REINFORCING BAR, PER ASTM C-478 & O.S.H.A. (STD 1-1.9)
6. BUTYL RUBBER JOINT SEALANT PER ASTM C-990 & ASHTO M-198
7. WATER PROOFING PER CONTRACT SPECS. AS REQUIRED
8. WEIGHT PER VERTICAL FOOT=1000 lbs., FLOOR=1122 lbs., FLAT TOP=1220 lbs.



SCITUATE RAY PRECAST
 120 CLAY PIT ROAD
 MARSHFIELD, MA 02050
 PHONE # 1-800-440-0009
 FAX # 781-837-4320

| | | | |
|-------------|------------------|------------------------|--|
| CONTRACTOR: | | JOB NAME: | |
| DATE: | DRAWING: SRP-MP4 | DRAWING BY: C.J. SCOTT | |