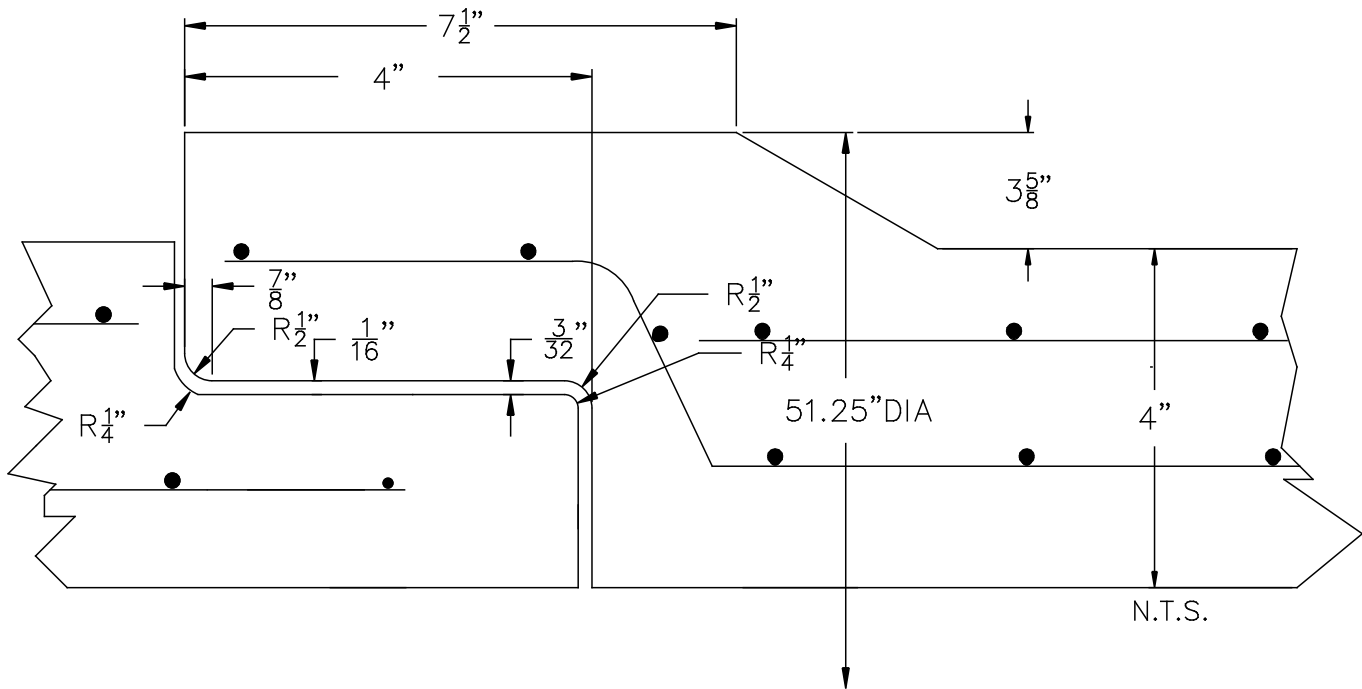


36" RCP MORTAR JOINT REINFORCED

DESIGN NOTES:

1. MFG. IN ACCORDANCE WITH ASTM SPEC. C76 & AASHTO SPEC. M170, WALL B.
2. CEMENT TYPE II
3. CONCRETE STRENGTH CLASS III & IV 4,000psi CLASS V 6,000psi
4. CIRCUM. REINFORCEMENT:
 - CLASS III 0.17 SQ. IN. PER FT. INNER CAGE
0.13 SQ. IN. PER FT. OUTER CAGE
 - CLASS IV 0.30 SQ. IN. PER FT. INNER CAGE
0.22 SQ. IN. PER FT. OUTER CAGE
 - CLASS V 0.50 SQ. IN. PER FT. INNER CAGE
0.38 SQ. IN. PER FT. OUTER CAGE
5. LAYING LENGTH 8'-0"



NPCA

Precast ... The Concrete Solution.



**SCITUATE
COMPANIES**

SCITUATE CONCRETE PIPE
P.O. BOX 870 * 1 BUCKEYE LANE
SCITUATE, MA 02066
PHONE # 1-800-322-4488
FAX # 781-545-6021

CONTRACTOR:

JOB NAME:

DATE:

APPROVED BY:

DRAWING BY: C.J. SCOTT

WWW.SCITUATECOMPANIES.COM